

“Using TransVault we were able to migrate data as a totally transparent background process, with no time pressures on the IT department and no adverse impact on end users”



## Key features

- No desktop installation.
- Centralized process manages the collection & conversion of users' address books.
- Minimal user interaction required.
- End users have full visibility & can confirm which address books they want moving.
- Re-writes internal Notes addresses so they are valid in Exchange.
- Status update keeps track of progress, allowing individuals or groups of users to be processes at a time.
- Designed to leverage Microsoft & 3rd-party migration tools.
- Optionally integrates with other TransVault solutions to migrate e-mails, encrypted items, local archives, calendars, etc. with zero downtime to your business.
- Fully supports Exchange 2007.

## IBM Lotus Notes Personal Address Book (PAB) Migrator

When migrating from IBM Lotus Notes to Microsoft Exchange, the ability to preserve and re-format users' legacy e-mails for use in the new environment is essential - both from a productivity and a compliance perspective.

Likewise, individuals invest a great deal of time maintaining contact lists, and will fully expect to use these lists in their new e-mail environment. *The prospect of staff building contact lists 'from scratch' is untenable, and would cost the business dearly in terms of lost productivity and loss of confidence in the new system.*

The **TransVault™ PAB Migrator** is designed to migrate and convert Lotus Notes address book information so that it is fully accessible to end users when they are switched to their new Microsoft Outlook account.

It allows the process of collecting personal address books, and subsequently uploading them into Outlook contacts folders, to be centrally managed, with minimal user interaction and nothing to install on the desktop.

The TransVault PAB Migrator can be used alongside other solutions in the **TransVault Notes Migration Suite**, which include:

- **TransVault™ Notes Migrator** - e-mail and calendar migration
- **TransVault™ Decrypter** - encryption status reporting & decryption

Migrating Notes personal address books (also known as NABs) can present organizations with a tricky challenge, as users may have several separate address books held on local systems,

Client-driven solutions are available, but this approach requires that end-users interact with specialized desktop applications, a scenario that will invariably lead to an increased burden on the IT team. A low success rate is also inevitable, owing to the fact that users may be 'too busy', 'not IT savvy enough', or simply not motivated to personally oversee the migration of their contacts.

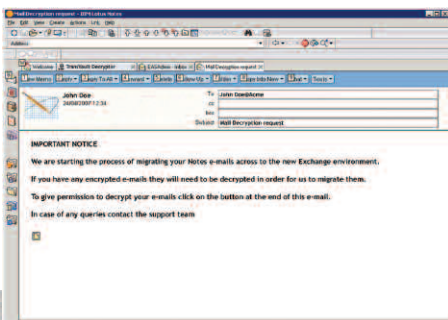
**Introducing TransVault -  
a better way to move.**

The TransVault PAB Migrator provides a fully centralized decryption service that enables end users to move their address books with just a few confirmation clicks.

**No Desktop Installation**

The PAB migration process involves the use of two integrated and centrally executed applications:

- The TransVault PAB Collector
- The TransVault PAB Migrator



The TransVault PAB Collector automates the collection of address books to a central location in the form of Vcard files. Its asynchronous operation ensures reliable collection from both fixed and mobile users spanning the enterprise.

Once the status of your selected users has turned to 'collected', the TransVault PAB Migrator takes over. This component extracts collected address books, converts them to Outlook Contact records and inserts them directly into the relevant Outlook folders in Microsoft Exchange.

User mailboxes are matched between Notes and Exchange using a table that contains mappings of Notes 'names' and Exchange addresses.

E.g. CN=John Doe/O=oldcompany;jond@newcompany.com

The TransVault PAB Migrator includes a function to automatically generate the mappings file.

The same mappings file can also be used to convert internal Notes addresses into contacts that are valid once moved into Outlook.

A records of successful migrations is maintained enabling migrations to be staged as required, for example, a group of users at a time.

**No Desktop Installation**

The TransVault PAB Migrator minimizes overheads for the IT team as it requires no desktop install and no end user training. The whole migration process is centrally managed and user interaction is kept to the absolute minimum.

Users are sent an e-mail which includes an 'export contacts' button. Simply clicking on the button and then confirming the address books they want to migrate (users may have several) starts the collection process.

**Now You're Ready to Go!**

The TransVault PAB Migrator can be used in conjunction with Microsoft or 3rd party mailbox migration tools or using other solutions in the TransVault Notes migration suite.

**A Total Exchange Migration Solution**

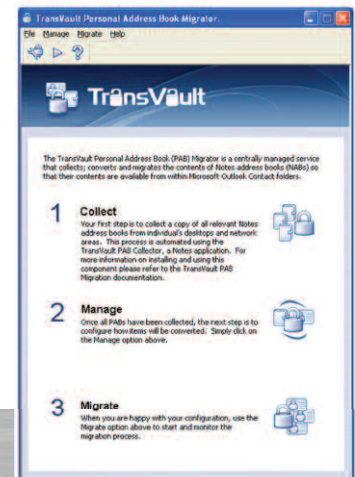
In addition to migrating address books, other TransVault applications designed to assist your migration to Microsoft Exchange include:

The TransVault™ Notes Migrator - converts and migrates e-mail, calendars etc to Microsoft Exchange format as a zero-impact 'behind the scenes' process that leverages e-mail archive technology.

The TransVault™ Decrypter - reports on and automatically decrypts any encrypted items prior to migration, with nothing to install on the desktop and just an authorization click from users.

Please contact Essential for more information.

Visit [www.TransVault.com](http://www.TransVault.com)



TransVault addresses the key challenges associated with data migration:

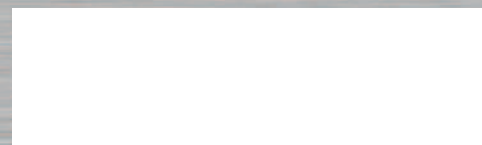
Challenge	The TransVault Solution
User impact	■ just a few clicks required for address book collection
IT staff overheads	■ no desktop rollout ■ no end-user training
Migration Time	■ enables data migrations to be carried out as a centrally managed process ■ simple approach encourages users take action as soon as they receive a request
Productivity	■ ensures addresses collected in Notes are immediately available from Outlook ■ re-writes internal Notes addresses so they that are usable from within Exchange
E-mail migration	Optional integration with other TransVault products offers: ■ zero impact mailbox migration (users keep working as their data is moved) ■ proven superior e-mail conversion, including embedded items & complex HTML ■ migration of mailboxes, calendars and personal archives ■ migration of shared mailboxes and journals ■ migration of encrypted items ■ no need to consolidate Notes servers prior to migration ■ improved storage consolidation, with savings of up to 80%

essential ©

With over 17 years experience in providing quality infrastructure and messaging solutions, Essential is behind some of the largest and most successful e-mail archiving projects in the world.

TransVault products & services bring you the benefit of a wealth of experience & expertise from a partner you can trust.

For more details & supported platforms contact Essential or your nearest authorized reseller.



Visit: [www.transvault.com](http://www.transvault.com)  
E-mail: [info@transvault.com](mailto:info@transvault.com)  
Call: +44 (0)1275 343199

