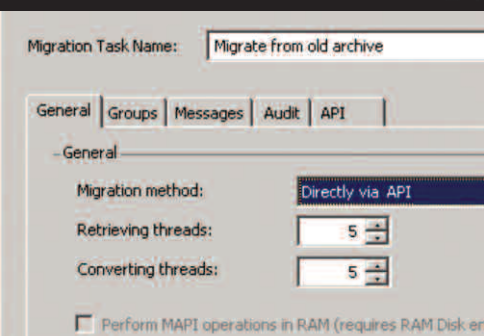


# E-mail Archive Migration Services



## Future-Proofing for Archived Data

Managing archived data to cope with change over time can be extremely challenging, with vendors offering only basic data tools to cope with, say, relocating an archived mailbox.

In scenarios which require mass data extractions, such as company mergers - where incompatible archives need to be rationalised onto a single service - or where poor vendor support and increasing cost of ownership is driving the need to switch to an alternative platform, organisations are finding that their legacy archived data is **locked in**.

Manually migrating data can take months of tedious, error-prone work with no guarantee of transparent user access or data integrity 'post-migration'.

Powered by the industry-leading **TransVault™** application, messaging experts Essential offer an e-mail archive migration service that lets you benefit from moving to a newer, more cost-efficient and scalable archive environment - and decommission your old archive service - in the knowledge that your legacy data will be fully intact, discoverable, and seamlessly accessible to end users.

*As part of a complete archive replacement and migration service from Essential, or working in conjunction with your preferred archive vendor, we will ensure a smooth and successful transition to your new archive environment.*

### Detailed Analysis - Flexible Migration Options

Prior to migration we will analyse your existing archive: *How much storage is being used? How many archive stores are there? What is the average mailbox size/total number of items? What shortcuts have been deleted or re-foldered.* We can then allow you to be selective over what data is migrated. For example you might decide to move items <7 years old or not move items where users have deleted their shortcuts. *We can also help detect corrupted or forgotten items.*



### Key Service Benefits

- Unlocks your legacy archived e-mail records, enabling fast, secure & audited transfer to alternative platforms & locations.
- Avoids the risks & costs associated with manual migration.
- Eliminates the costs associated with managing legacy archives.
- Legacy shortcut conversion ensures total transparency for users.
- Optional address re-writes help migrations to a new domain.
- Fully distributable architecture enables optimum throughput.
- Direct API transfers enhance fidelity & eliminate the need for intermediate storage.
- Automatic re-tries on failed items & full progress reporting minimises intervention.
- Selective migration helps optimise your new archive to reflect growth patterns, company restructuring etc.
- Retention policy mapping & reconstruction of information such as BCC'd recipients enhances your e-mail records compliance.
- Supports Notes to Exchange migrations, with ability to convert message formats, migrate contacts and decrypt Notes e-mails.

### Supported Platforms

- Symantec Enterprise Vault for Exchange (V5-V8) or Notes
- Autonomy ZANTAZ EAS for Exchange or Notes
- OpenText IXOS-eCONserver
- EMC EmailXtender for Exchange or Notes
- EMC SourceOne for Exchange or Notes
- EMC Centera
- Quest Archive Manager
- Mimosa NearPoint
- iLumin Assentor
- ZL Unified Archive
- Hosted archive vendors
- Microsoft Personal Stores (.PST)
- SMTP MIME-standard .EML
- Outlook .MSG file format
- Microsoft Exchange (V2003-2010)

New connectors are being added all the time or can be commissioned. Please contact Essential for details.

### Fast, Optimised Operation

Your migration can be scheduled to suit network loading, rollout of the new archive environment, etc. TransVault can run on several servers if you wish, automatically sharing the migration workload to optimise throughput. *In excess of 2TB a day can be migrated depending on the performance of your archive and network.*

### Totally Transparent to End Users

We make the migration process as invisible as possible to your e-mail users - even the conversion of shortcuts to archived data is seamless. *There is no interruption in access to your archive service.*

### Migration Audit & Retention Policy Mapping

Our complete migration audit report helps ensure chain-of-custody and the ability to map retention policies between vendor systems means data is maintained in accordance with business and legislative needs. It's also possible to reconstruct vital information such as BCC'd recipients that have been captured by journal archives. *No other migration path gives as much compliance protection for your e-mail records.*

**essential** ©

+44 (0)1275 343199  
info@essential.co.uk  
www.essential.co.uk